



Product Code: CGT 12 38 Series

Description:

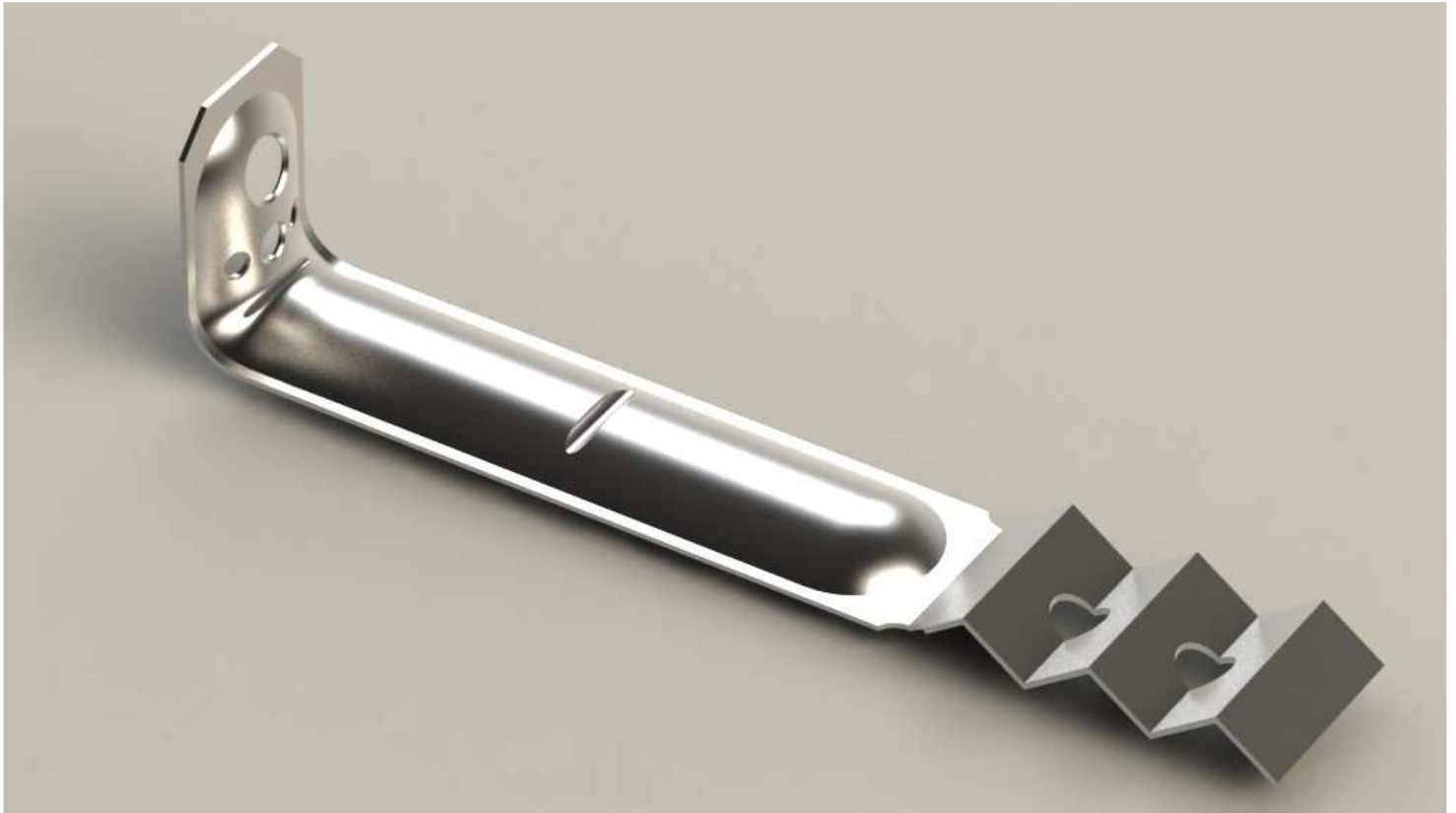
Heavy Duty Veneer Wall Tie.

Specifications:

Galvanised Z600 (R2)

Stainless Steel (R4) T316

Available Sizes: 200mm 250mm 300mm 350mm 400mm



***Fixing Requirements**

- SHUREDRIIVE fasteners or any approved equivalent
- TAPCON masonry screws 14g or any approved equivalent
- S/Drilling treated pine screws 8g X 32mm galvanised class 3 finished
- S/Drilling hex head 8g X 12mm galvanised class 3 finished
- 30mm X 2.8mm dia galvanised connector nail

**Conforms to corrosion resistance of R3 for use in coastal Areas to requirements set by AS/NZS 2699.1(2000) / AS 3700.*

Factory 2 & 4, 29 Hossack Street, Nth Coburg Victoria 3058.

Ph: +61 03 9350 5812 Fax: +61 03 9354 5575 Email max@cerra.com.au