



Product Code: CGT 12

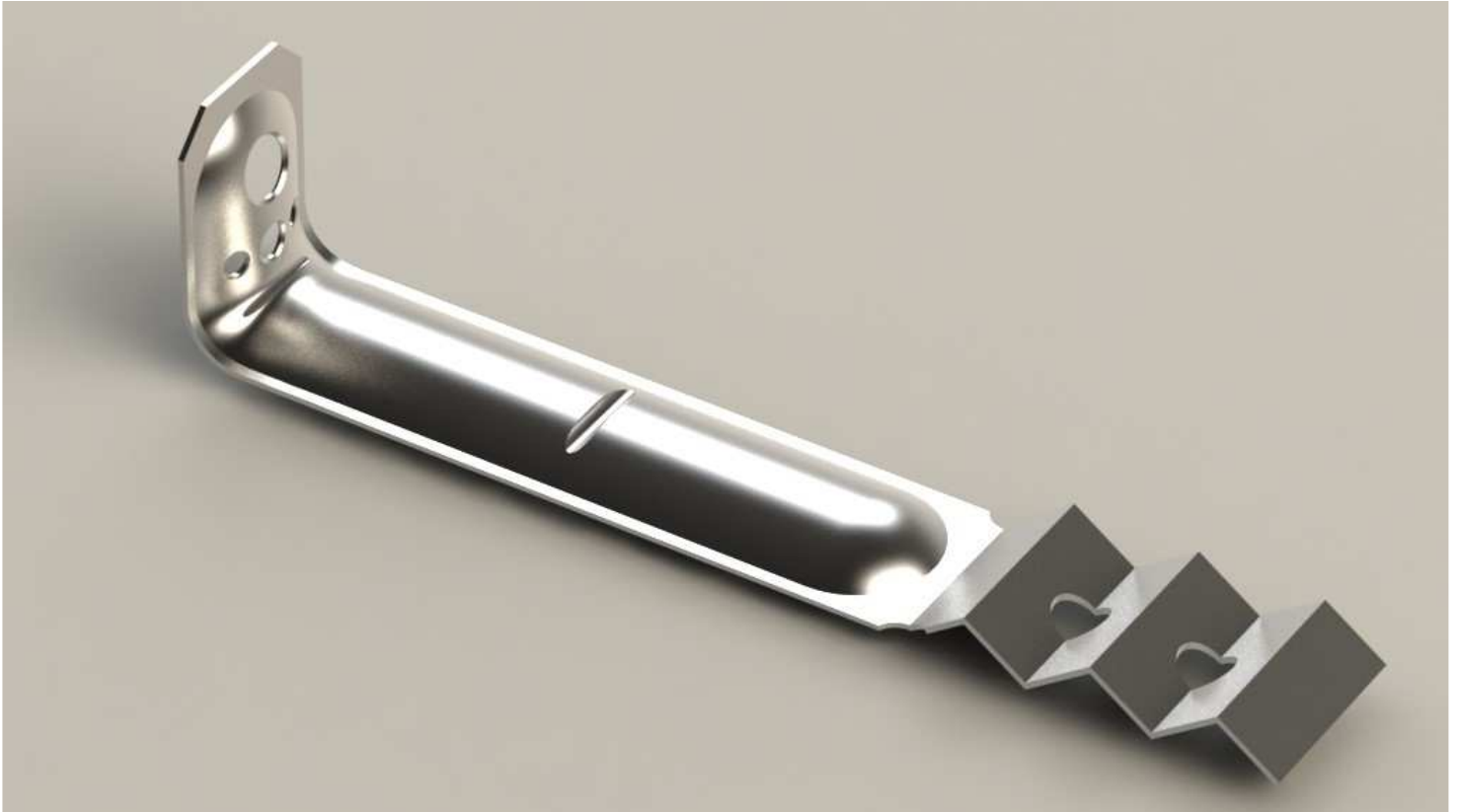
Description:

Medium Duty Veneer Wall Tie.
Type A

Specifications:

Galvanised Z600 (R2)
Stainless Steel (R4) T316

Available Sizes: 100mm 125mm 150mm 200mm 250mm and 300mm



***Fixing Requirements**

- SHUREDRIIVE fasteners or any approved equivalent
- TAPCON masonry screws 14g or any approved equivalent
- S/Drilling treated pine screws 8g X 32mm galvanised class 3 finished
- S/Drilling hex head 8g X 12mm galvanised class 3 finished
- 30mm X 2.8mm dia galvanised connector nail

**Conforms to corrosion resistance of R3 for use in coastal Areas to requirements set by AS/NZS 2699.1(2000) / AS 3700.*