



Cerra have been designing testing and manufacturing metal building products of the highest quality for over 40 years now. We have consistently provided and maintained a high-quality product and level of customer service.

AS 3700 & AS 2699 give guide lines on distance of structures from coast and sheltered bay areas, also some consideration that should be given to chemical plants and swimming pool projects that create an internal environment that prematurely corrode metal building components.

Below is a chart showing materials required for location of construction.

Ocean Coastal Areas

	Steel Sheet Ties	Steel Wire Ties
0-1km Severe Marine	316 Stainless Steel (R4)	316 Stainless Steel (R4)
1-9km Marine	316 Stainless Steel (R4) 304 Stainless Steel (R3) Hot Dipped Galvanized to 470/M2 (R3)	316 Stainless Steel (R4) 304 Stainless Steel (R3) Hot Dipped Galvanized to 470/M2 (R3)
>10km mod-mild	316 Stainless Steel (R4) 304 Stainless Steel (R3) Galvanized Z600 (R2) Hot Dipped Galvanized to 470/M2 (R3)	316 Stainless Steel (R4) 304 Stainless Steel (R3) Hot Dipped Galvanized to 470/M2 (R3)

Sheltered Bayside Areas

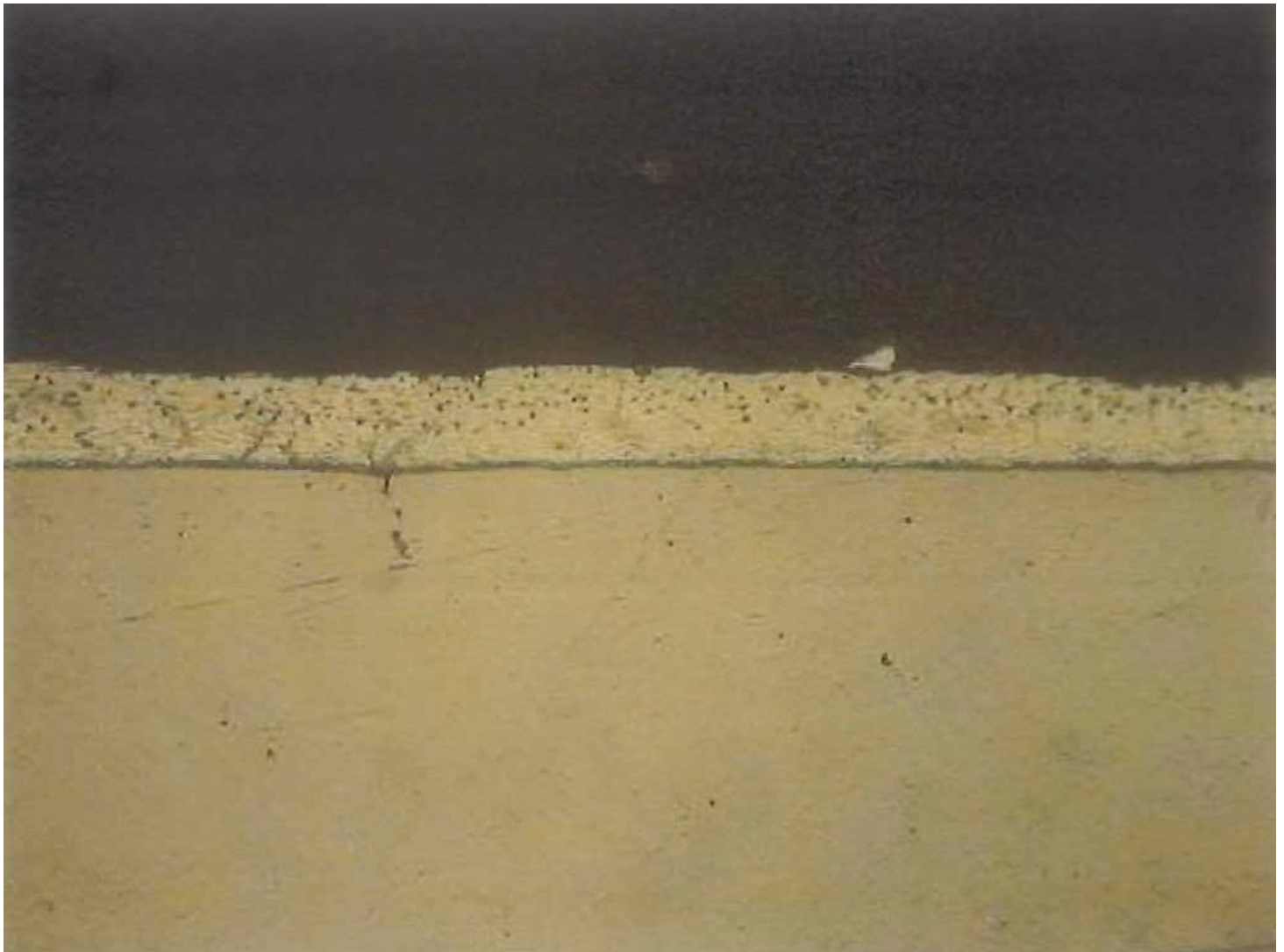
	Steel Sheet Ties	Steel Wire Ties
0-100mtrs Severe Marine	316 Stainless Steel (R4)	316 Stainless Steel (R4)
100mtrs-1km Marine	316 Stainless Steel (R4) 304 Stainless Steel (R3) Hot Dipped Galvanized to 470/M2 (R3)	316 Stainless Steel (R4) 304 Stainless Steel (R3) Hot Dipped Galvanized to 470/M2 (R3)
1-9kms Moderate	316 Stainless Steel (R4) 304 Stainless Steel (R3) Galvanized Z600 (R2) Hot Dipped Galvanized to 470/M2 (R3)	316 Stainless Steel (R4) 304 Stainless Steel (R3) Hot Dipped Galvanized to 470/M2 (R3)
10km mod-mild	316 Stainless Steel (R4) 304 Stainless Steel (R3) Galvanized Z600 (R2) Hot Dipped Galvanized to 470/M2 (R3)	316 Stainless Steel (R4) 304 Stainless Steel (R3) Hot Dipped Galvanized to 470/M2 (R3)



The following two photos are showing coating thickness of (Z600 Pre-galvanized material) meaning that the brick tie material was hole punched and manufactured after galvanizing Fig 1. Pre-galvanized has exposed edges that immediately starts to corrode once exposed to the environment.

Fig 2 is a product that is Hot Dipped Galvanized post manufacture meaning all manufacture has been Done pre-the galvanizing process and all edges and surfaces are coated.

Fig 1



Factory 2 & 4, 29 Hossack Street, Nth Coburg Victoria 3058.

Ph: +61 03 9350 5812 Fax: +61 03 9354 5575 Email max@cerra.com.au



Fig 2



The testing has shown a significant coating thickness between Z600 and Hot dipped galvanizing.